

# Prof. Alice Shalvi



**BORN IN 1926**

ISRAELI ACTIVIST, EDUCATOR AND  
**FEMINIST**

**IN 1949**

SHE IMMIGRATED TO ISRAEL FROM  
GERMANY VIA ENGLAND.



**IN 1975**

SHE HEADED A UNIQUE PROGRESSIVE HIGH SCHOOL  
FOR RELIGIOUS GIRLS, PELECH.



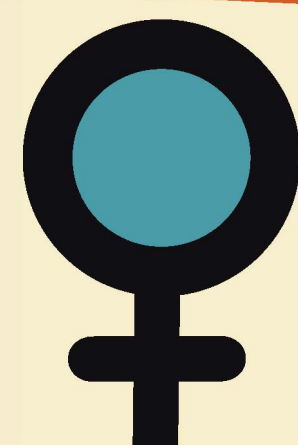
**IN 1984**

SHE WAS THE FOUNDING CHAIRWOMAN OF THE ISRAEL WOMEN'S  
NETWORK, THE MAJOR ADVOCACY GROUP FOR THE RIGHTS OF  
WOMEN. SHE LED THE ORGANIZATION FOR 16 YEARS AND MADE  
A SIGNIFICANT IMPACT WITH REGARDS TO WOMEN'S  
RIGHTS IN ISRAEL.



**IN 2007**

AWARDED THE ISRAEL PRIZE FOR LIFETIME CONTRIBUTION  
TO THE STATE IN EDUCATION AND WOMEN'S RIGHTS.



**IN 2017**

AWARDED THE BONEI ZION PRIZE, NEFESH BENEFESH -  
RECOGNIZING PROF. SHALVI AS MAKING A MAJOR CONTRIBUTION  
TO THE STATE OF ISRAEL.



IT'S NOT JUST BETWEEN MEN AND WOMEN, IT'S A TOTAL VIEW OF  
EQUALITY WHICH IS WHY IT OVERLAPS SO MUCH WITH PACIFISM  
OR THE DESIRE FOR PEACE.

